

Jan,11 to Dec,11

# Newsletter



## HIGHLIGHTS OF THIS ISSUE

- OVERVIEW
- MAJOR PROJECTS EXECUTED BY GROUP
- PARTICIPATION IN EXHIBITION
- NEW RECRUITMENT
- NEW DIVISION
- FLEET EXPANSION



## OVERVIEW

Dear Customers,

Welcome to 4<sup>th</sup> edition of newsletter of ABC Dubash Group. The aim of the newsletter is to inform our clients about our major achievements in last 12 months and here are the some of the highlights : -

Year 2011 was a great year for Logistics Industry. Due to expansion of Mangalore and Paradip refinery this year, Logistics industry had to handle and move many Super Heavylifts and Super ODC equipments from West Coast to West Coast and West coast to East Coast which was a big challenge. Due to advancement of technology, size & weight of the equipments being much larger compared to earlier, transportation of these equipments had many challenges for Logistics Operators. Once again it is proved that multimodal is a best solution for transportation of Super Heavylifts and ODC equipment We are proud to mention here that till now Urmila has transported total 32 equipments for Mangalore Refinery Project, more details given in the newsletter. Selection of proper mode of transport, proper methodology, proper equipments are the key elements for successful transportation of Super Heavylift and ODC equipments. This year we have secured contracts from 7 different parties for transportation of total 31 equipments from various locations to Paradip Refinery project and have already delivered 8 packages successfully to the site and are going to handle packages having large dimensions 40.0m x 8.60m x 8.50m – 930 MT, 70m x 6.60m x 9.0m – 620 MT. Urmila has added Goldhofer Self propelled axles to its fleet and is the 1<sup>st</sup> company in India to import Goldhofer make Self propelled axles. Urmila has bagged Turnkey Logistics contract for 100000 MT cargo from Lanco for their 2 x 660 MW Babandh Power Project. More details of our activities you will find in newsletter and hope you will find our newsletter interesting. Please feel free to send your comments / suggestion to [urmilaprojects@abcdubash.com](mailto:urmilaprojects@abcdubash.com)



H. S. Acharya  
Chief Executive



**MAJOR PROJECTS EXECUTED BY URMILA PROJECT SERVICES**

**MULTIMODAL TRANSPORTATION OF 32 SUPER ODC EQUIPMENTS CONSISTING OF EQUIPMENT HAVING WEIGHT UPTO 555 MT FOR MRPL, MANGALORE**

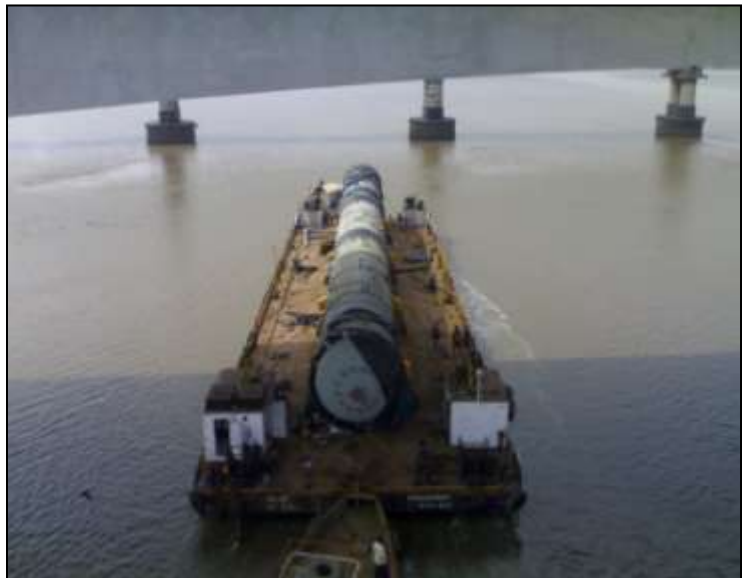
Knowing the expertise of Urmila in multimodal transportation we have received order from 4 major fabricators (Vijay Tanks, ISGEC, Phils Engineering & G. R. Engineering) under 3 EPC contractors, EIL, Toyo and Punj Lloyd for transportation of 32 nos ODCs and Super ODCs from 4 different locations (Padgha Mumbai, Tarapur, Kandla and Dahej) to MRPL. 32 nos ODCs packages consist of maximum weight of 555 MT, maximum dia 10m and longest package of 54 m. Giving below photographs of few packages.

We have deployed following resources for completion of these jobs and completed the job to the entire satisfaction of the clients.

<b>Equipment</b>	<b>Total Nos</b>	<b>No of Trips</b>
Flat Top IRS Class Barges	5	9
Heavy lift ships	3	4
Sea going Tugs	4	
Hydraulic axles	258	

Giving below summary of activities undertaken by us during execution of these contracts. Apart from this Urmila has successfully opened navigable channel from Kalwa to Mumbai to avoid long span bridge.

<b>Sea Voyages</b>	<b>13</b>
<b>By barge</b>	<b>9 nos</b>
<b>By ship</b>	<b>4 nos</b>
<b>Road Transportation</b>	<b>32 nos</b>
<b>Beaching Ro-Ro</b>	<b>9 nos</b>
<b>Floating Ro-Ro</b>	<b>7 nos</b>
<b>Ro-Ro jetty modified</b>	<b>2 nos</b>
<b>Bypasses constructed</b>	<b>3 nos</b>



**Barge transportation of Absorber ( 48.9m x 3.9m x 4.40m – 175 MT) from Kalwa jetty to Mumbai port**

**Handling of packages for Vijay Tanks (Package above 300 M. Tons)**

Urmila has received contact from M/s. Vijay Tanks for transportation of 15 nos Supper ODCs & Heavylifts from Vijay Tank Kandla SEZ works to Kandla port for Mangalore Refinery. This includes following 5 Super ODCs having weight between 400 M. Tons to 555 M. Tons.

Sr. No	Particular	L (m)	W (m)	H (m)	WT (MT)
1	Main Fractionator	54	8.9	9.6	520
2	C3 Stripper - Bottom section	41.4	8.9	10.3	555
3	C3 Rectifier - Bottom Section	38	8.6	10.2	460
4	C3 Stripper - Middle section	34.4	7.6	8.3	435
5	C3 Rectifier - Middle Section	32.3	8	8.37	400

Urmila has mobilized 61 nos Goldhofer axles, 3 nos 520 HP Prime Movers for transportation and handled all the packages in 3 shipments and the last package was loaded on ship “Beluga Bremen” at Kandla port on 1<sup>st</sup> March,11 for further coastal voyage upto Mangalore. During execution of this contract due to excessive dimension Urmila has constructed 3 nos bypasses and had to maneuver at 6 critical turns and 3 level crossings. Urmila has executed the job in most professional manner and had obtained required permissions from NHAI, Port, Electricity Authorities & Railways etc. Equipment Main Fractionator having dimension 54m x 8.9m x 9.6m – 520 M. Tons was the largest in size moved out of Vijay Tank factory and handled at Kandla port for the first time.



**Main Fractionator 53.95m x 8.90m x 9.60m – 520 MT from Vijay Tank Kandla works to Kandla port**

**Multimodal transportation of 4 nos Coke Drums from ISGEC Dahej to MRPL**

We have been awarded the contract by ISGEC for transportation of their 4 nos Coke Drum having dimension 41.7m x 10.10m x 10.50m – 454 MT from ISGEC Dahej to MRPL. We have mobilised total 84 axles, 4 pullers, 2 barges and 2 tugs and have transported the packages in 4 barge trips. Our scope was to transport packages from ISGEC Dahej to Adani jetty by road, load the equipments onto barge using ro-ro, barging of equipments from Dahej to Mangalore, roll off at Mangalore and further by road upto project site. Job was completed to the entire satisfaction of the client.



Transportation of Coke Drums having dimension 41.7m x 10.10m x 10.50m – 454 MT

Recently Urmila has moved 2 consignments having huge dimension from ISGEC to Mangalore after compliance of all Marine Warranty Surveyor’s requiremet in November,2011.



Transportation of package having dimension 10.17m X 10.17m X 9.05m - 206 MT on 10 + 10 axles from ISGEC Dahej to Mangalore



Package having dimension 10.17m X 10.17m X 6.90m – 168 MT and 206 MT loaded on our barge at Adani Dahej port jetty.



## PHILS HEAVY ENGINEERING PVT LIMITED - COASTAL SHIPPING. FIRST WEST COST TO EAST COAST MOVEMENT

Urmila has secured contract from Phils Engineering for transportation of 5 Super ODC consignments from Phils Padha, Mangalore to IOCL Paradip and have already delivered 4 equipments successfully to Paradip and the 5<sup>th</sup> equipment will be moved in February,2012.

Due to excessive dimension of the packages and to avoid long span bridges in Mumbai, Urmila transported these equipments by road cum barge upto Mumbai port and have engaged heavylift ship to transport further upto Paradip. We faced many challenges due to over dimensional nature of the cargo, draft and air draft limitations under the bridge between Kalwa to Mumbai.

For this transportation we have constructed ro-ro facility at Ulwa and have mobilised 4 barges for transportation upto Mumbai port and chartered heavylift ship from Mumbai port to Paradip. Giving below photographs of packages while loading onto ship at Mumbai port.



## LANCO BABANDH 2 X 660 MW POWER PROEJCT

Urmila has secured turnkey logistics contract from Lanco for their 2 x 660 MW Power Project. Urmila is going to handle total 106260 MT cargo from Paradip, Vizag port. This project started in March,2011 and so far we have handled approx 50% of the cargo.

**HANDLING OF 4 HEAVYLIFTS FROM BHEL HYDERABAD TO IOCL PARADIP. EAST COAST TO EAST COAST MOVEMENT**

Urmila has secured contract from BHEL for multimodal transportation of following 4 packages (Stator 9.10m x 4.05m x 4.0m – 213 MT, Qty – 2 nos and Turbine 11.55m x 5.03m x 5.23m – 222 MT, Qty – 2 nos) from BHEL Hyderabad to Machalipatnam. Transportation of these machineries from BHEL Hyderabad to IOCL Paradip is a challenging job due to long span bridges enroute hence we have opted for multimodal transportation. We have transported packages by road from BHEL Hyderabad unit to Machalipatnam and have constructed ro-ro facility at Machalipatnam to load the packages onto barge and have transported packages by barge upto Paradip port jetty. Giving below few photographs of this operation.



Jetty constructed at Machalipatnam



Barging from Machalipatnam to Paradip

**OTHER COASTAL MOVEMENTS**

Apart from the above jobs Urmila has undertaken other coastal movements by engaging barge and tug and few of them are given below : -



We have transported 2 nos Transformers having dimension 12.30m x 5.0m x 4.60m – 282 MT from Ulwa jetty to Mundra port.





**Serving Shipping Industry**

Urmila has provided barge and tug for shifting of ship modules for a Bharati shipyard having size 8.36m x 7.85m x 11.12m – 348 MT

We have recently loaded 6 packages of Technoprocess having maximum dia of 8.5 m on barge at Ulwa for transportation upto Paradip port jetty.



**Petrofac Project (Export)**

We have transported 3 packages having dimension 17.12m x 6.87m x 6.50m – 296 MT, Qty – 2 nos, 15.68m x 4.68m x 6.75m – 210 MT meant for export from ISGEC Dahej factory, loaded on barge at Adani port jetty and offloaded successfully at Mumbai port by floating ro-ro and offered under the ship's hook.





## PARTICIPATION IN EXHIBITION



Alongwith Goldhofer Germany Urmila has participated in Excon exhibition at Bangalore and introduced our newly purchased Goldhofer PST axles.

## NEW RECRUITMENT

Following personnel have joined our Group

- Capt. Vijay Vadhera Ex. Navy has joined us as a Head – Marine Operations.
- Mr. Sanjay Dayal joined us as a SBU Head – Logistics
- Mr. Jagdish Mirji has joined us as a General Manager Marketing.
- Mr. Rajesh Wadekar joined us as a Dy. General Manager – Projects.

## FLEET EXPANSION



We are proud to inform you that we have purchased Goldhofer PST axles (Self propelled) designed for transportation of large and heavy cargo. These axles are operated by remote control and can be coupled side by side and end to end with standard Goldhofer hydraulic axles. These axles can take 1600 tons load (32+32 axles combination)

New investments have been made by adding VOLVO prime movers and have purchased 23 mechanical trailers.



**STRATEGIC BUSINESS UNIT**

Since Urmila is specialized in multimodal transportation and turnkey project logistics services and handling more and more jobs Group felt there is a need to open a SBU to continue providing the transportation services for Heavylifts below 200 M. Tons from various ports and manufacturing units to Project sites all over India. This division has plans to own axles and 10 pullers and already operational in the name of Group company M/s. Mackinnons Abad Shipping Limited at the following address.

Ador House, 3<sup>rd</sup> floor,  
6 K Dubash Marg,  
Mumbai.  
T : 022 - 22048042

We are thankful to all those who contributed to this edition of the News Letter. We appreciate your comments. Please continue to send them to below address.

**Head Office**

ABC Dubash Group  
Mackinnon Mackenzie Building,  
4, S. V. Marg, Ballard Estate, Mumbai : 4000 01  
TEL : +91 22 22610981 / 22622105 / 22616245 / 22614593  
FAX : +91 22 22618004 / 22614207  
EMAIL : [urmilaprojects@abcdubash.com](mailto:urmilaprojects@abcdubash.com)

**Regional Office**

Mr. Chand Kapur  
509, Shakuntla Apartments,  
59, Nehru Place,  
New Delhi 110 019.  
TEL : 91 11 4161 8541 / 6510 7097  
FAX : 91 11 4161 8541  
CELL: 91 98100 22747  
EMAIL: [ckapur@abcdubash.com](mailto:ckapur@abcdubash.com) ; [ckapur@airtelmail.in](mailto:ckapur@airtelmail.in)

**Group Companies**

M/s. Ardeshir B. Cursetjee & Sons Limited  
M/s. Urmila Project Services  
M/s. Urmila & Company Limited  
M/s. Mackinnons Abad Shipping Pvt Ltd

